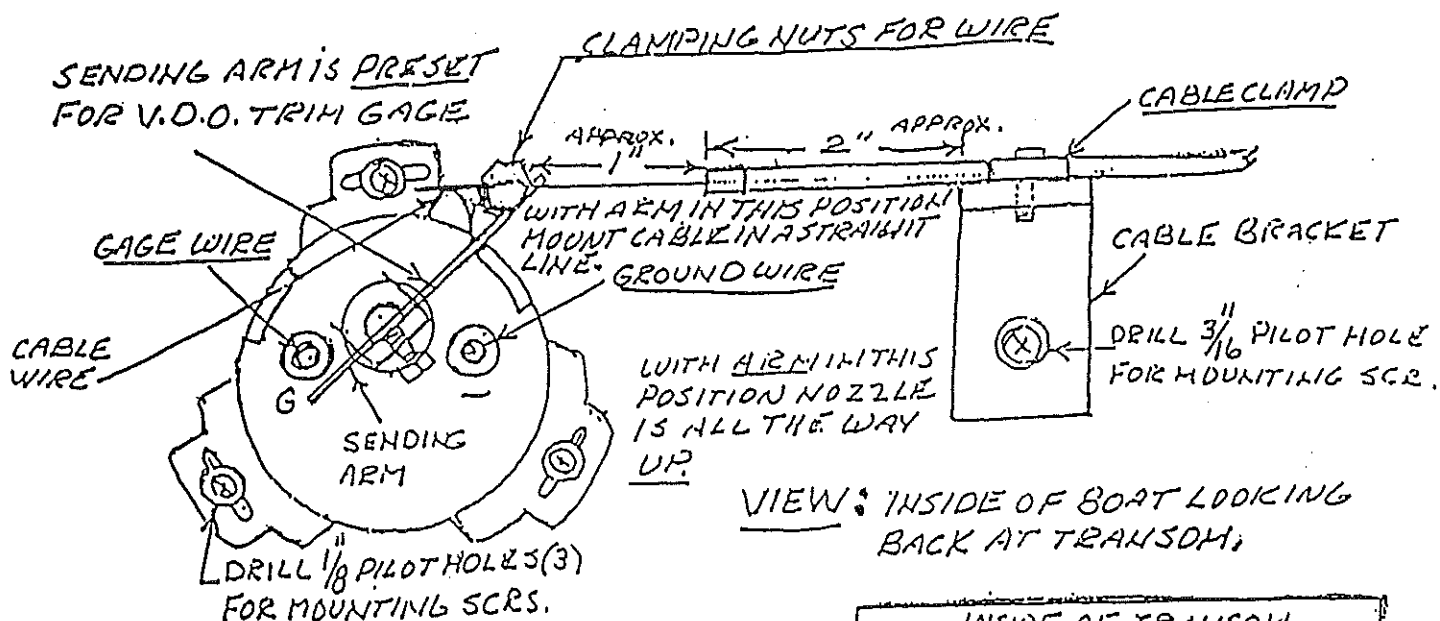


SENDING UNIT & CABLE BRACKET MOUNTING



CABLE INSTRUCTIONS:

CRIMPED END OF CABLE IS SEALED AND GOES OUTSIDE OF BOAT. THE OTHER END OF CABLE WITH LOOSE END CAP CAN BE CUT TO DESIRED LENGTH WITH WIRE CUTTERS & END CAP GLOUED BACK ON.

SENDING UNIT ADJUSTMENT:

POSITION PLACE DIVERTER IN MAXIMUM UP POSITION. PUT SENDING UNIT ARM IN POSITION AS SHOWN ABOVE. PLACE WIRE FROM CABLE THRU HOLE IN PIN AND TIGHTEN CLAMPING NUTS. PLACE WIRE THRU PIVOT PIN ON PLACE DIVERTER AND TIGHTEN CLAMPING NUTS. TRIM GAGE SHOULD READ ACCORDINGLY. MINOR ADJUSTMENTS MAY BE NECESSARY.

WIRING SYSTEM:

